



RUTGERS  
UNIVERSITY | NEW BRUNSWICK



# Rutgers–New Brunswick

Presented by Chancellor-Provost Francine Conway, PhD  
Rutgers University Senate  
April 28<sup>th</sup>, 2023



BY THE NUMBERS

**TOP 20** Public University

*U.S. News and World Report*

**43,000+** Students

**10,600** Faculty & Staff

**20+** Programs and schools  
in the Nation's Top 20

**300+** Fulbright Student Grants

*Along with 11 Gates Cambridge Scholars,  
6 Schwarzman Scholars, 3 Marshal Scholars*

For Opportunities.  
For discoveries.  
For Progress.



## Where dreams become dream jobs

With exceptional job placement rates following graduation, Rutgers prepares students well for success.

*Discover Excellence*



**Rutgers University—New Brunswick** 

Sponsored · 

Rutgers is leading the search for a better tomorrow.





NEWBRUNSWICK.RUTGERS.EDU


**Because climate change won't fix itself**

Forge the path ahead here


[Learn more](#)



**Rutgers University—New Brunswick** 




Sponsored · 

Rutgers offers the classic college experience with fast and easy access to New York City.



[admissions.rutgers.edu](#)  
New Jersey address. New York access.

[Learn more](#)

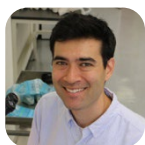
 Like  Comment  Share



2022-2023

## International and National Faculty Recognition

2023 Sloan Fellowship,  
Alfred P. Sloan Foundation



**Benjamin A. Black**  
*School of Arts and Sciences*



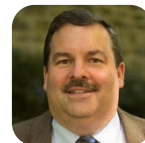
**Bhargav Narayanan**  
*School of Arts and Sciences*

National Association of Social Workers  
Foundation Pioneer



**Rebecca Davis**  
*School of Social Work*

2022 Fellows of the American Association  
for the Advancement of Science



**William K. Hallman**  
*School of Environmental and Biological Sciences*



**Rachael Winfree**  
*School of Environmental and Biological Sciences*



**Malin Pinsky**  
*School of Environmental and Biological Sciences*



**Bonnie Firestein**  
*School of Arts and Sciences*



**Robert Kopp**  
*School of Arts and Sciences*



**Saurabh W. Jha**  
*School of Arts and Sciences*



2022-2023

## International and National Faculty Recognition

### Mellon Grant Recipient



**Meredith L. McGill**  
*School of Arts and Sciences*

### Fulbright-Hays Grant Recipient



**Esther Ohito**  
*Graduate School of Education*

### 2022 CAREER Award, National Science Foundation



**Shirin Jalali**  
*School of Engineering*



**Benjamin Schuster**  
*School of Engineering*



**Bo Yuan**  
*School of Engineering*

### Fellowship, National Endowment for the Humanities



**Yesenia Barragan**  
*School of Arts and Sciences*



**Judith Surkis**  
*School of Arts and Sciences*



## COACHE Survey

Supporting New Faculty,  
Mid-Career, Late Career, NTT,  
Chairs, Department Leaders

**CENTER FOR  
FACULTY SUCCESS**

**FACULTY LEADERSHIP  
DEVELOPMENT**

**FACULTY CAREER  
ADVANCEMENT**

ACADEMIC MASTER PLAN

# Four Pillars of Excellence







SCHOLARLY  
LEADERSHIP

I



INNOVATIVE  
RESEARCH

II



STUDENT  
SUCCESS

III



COMMUNITY  
ENGAGEMENT

IV





*Excellence in Action*

## Reefense: A Mosaic Oyster Habitat for Coastal Defense







*Excellence in Action*

## Gloria Steinem Endowed Chair in Media, Culture, and Feminist Studies







*Excellence in Action*

# **Socially Cognizant Robotics for a Technology Advanced Society (SOCRATES)**







*Excellence in Action*

# Integrated Dance Collaboratory







*Excellence in Action*

# Eco-Glider Offshore Wind Initiative



# DISCOVERY ADVANTAGE

*REIMAGINING THE  
STUDENT EXPERIENCE*

## *Core Value:* Student Success

### STREAMLINING CURRICULUM

Clear Academic Pathways  
Experiential Learning  
Rethink Gateway Courses with High DFW Rates  
Pedagogical Development

### FOSTERING STUDENT BELONGING/ SUPPORT

Living-Learning Communities  
Summer Prep Programs  
Support for Belonging, Academic Confidence  
Campus Climate

### BUILDING HOLISTIC ADVISING

Student-Centered Design:  
Meta-Majors, Path for Transfers, Degree Mapping  
Tech-Enabled, Holistic Advising  
Improve Retention, Reduce Time to Completion

### EXPANDING ACCESS TO ACADEMIC EXCELLENCE

Address Needs of New and Transfer Students  
Maximize Student Success  
Reduce Student Debt  
Address Roadblocks to Retention, Graduation





# TEACHING, LEARNING, AND **INCLUSIVE** **PEDAGOGY** INITIATIVE

# 15<sup>+</sup> to finish

Empowers students to graduate on time with minimal debt through completion of 15 or more credits/semester.

Connects students with resources needed to stay on track.

**SUCCESS.RUTGERS.EDU**



SEARCH SUCCESS



## SUCCESS ESSENTIALS

We are committed to your success at Rutgers - including your timely degree completion, with minimal financial debt, employment or advanced study in your preferred field, and mastery of critical skills and competencies for post-graduate success. Enrolling and successfully completing 15 or more credits each semester will help put you on a path to timely graduation.

Ensure you have the foundation in place to be successful. Explore these resources for financial assistance, to meet your academic needs, stay healthy, and be safe.



**FINANCIAL ASSISTANCE  
& AID**



**ACADEMIC ADVISING &  
POLICIES**



**HEALTH & WELLNESS**



**SAFETY & URGENT  
NEEDS**





# scarlet*well*

A public health and prevention-focused approach to mental health and wellness for students, faculty, and staff.

Establish Rutgers–New Brunswick as a Center of Excellence.

# **APLU** **Innovation and Economic Prosperity**



**Working toward recognition  
as an Innovation and Economic  
Prosperity University.**

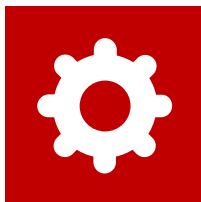


# Chancellor-Provost Challenge *Toward the Common Good*

Investing \$15M over five years to build cross-departmental, interdisciplinary scholarly communities focused on:



Climate and  
Sustainability



AI and  
Data Science





# A New Strategy for the Life Sciences

Re-envision research **across Rutgers–New Brunswick**, in partnership with **RBHS**, the **Office for Research**, other RU stakeholders

Promote **joint research** and **external funding** opportunities

**Strengthen relationships** with local, state, and federal agencies, philanthropic foundations, industry partners

**Jean Baum**

Vice Provost for Life Sciences  
Research and Partnerships







## Brandt Youth Behavioral Health Treatment Center and Residence & Institute for Youth Behavioral Health

### Common Good, Community Engagement

Using the power of our research engine to fill a ***longstanding need*** for NJ youth with mental health disorders.

### Academic Excellence, Student Success

Setting the ***gold standard*** for interdisciplinary, evidence-based behavioral health care treatment and training.

### Collaboration

RUNB/GSAPP, RBHS/UBHC, Rutgers Center for Youth Social Emotional Wellness, RU Foundation, more.

# Thank You



# RUTGERS

UNIVERSITY | NEW BRUNSWICK