



Chancellor's Report: University Senate November 17, 2023



RUTGERS
BIOMEDICAL AND
HEALTH SCIENCES



Rutgers Health Status Report

- Background/Reminder
- Progress Report

My Goal as RBHS Chancellor

To build one of
the best
academic health
centers in the
country, with an
emphasis on *one*.



RBHS Entities

Schools	
New Brunswick	Newark
Robert Wood Johnson Medical School	New Jersey Medical School
Ernest Mario School of Pharmacy	Rutgers School of Dental Medicine
Multi-Campus	
School of Graduate Studies	
School of Health Professions	
School of Nursing	
School of Public Health	
<i>Circa 2027-28 – Rutgers School of Medicine</i>	

Chancellor Level Centers/Institutes	
Brain Health Institute	
Center for Advanced Biotechnology and Medicine	
Institute for Nicotine and Tobacco Studies	
Environmental and Occupational Health Sciences Institute	
Institute for Health, Health Care Policy, and Aging Research	<ul style="list-style-type: none"> • Global Health Institute • Center for Population Level Bioethics • PETS
Institute for Infectious and Inflammatory Diseases	
Rutgers Cancer Institute of New Jersey	
Rutgers Institute for Translational Medicine and Science	

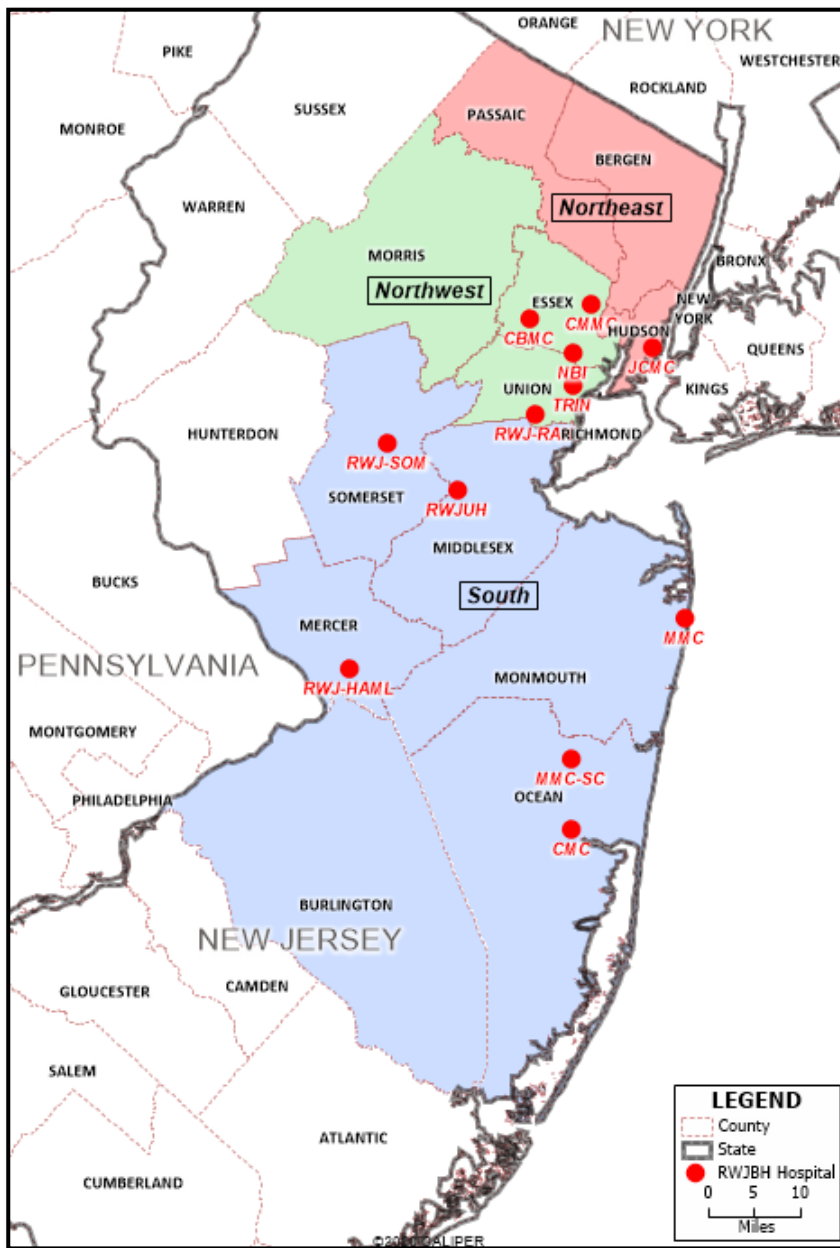
Clinical Units
University Behavioral Health Care
University Correctional Health Care

Rutgers Health at a Glance

Rutgers Health has approximately:

- 2,414 paid faculty members
 - 1,677 full time faculty (1.0 FTE)
 - 254 part time faculty (>0.99 FTE)
 - 464 per diem faculty
- 4,086 volunteer faculty
- 10,411 staff; 1,132 interns and residents
- 6,821 students (fall enrollment 2023)
- 49 buildings, +1 under construction
- 6.3 million gross sq. ft./137 acres
- 2.8 million patient visits/year
- 587 clinical trials
- \$2.48 billion annual budget –FY24





RWJBH 12/Rutgers Health-County Service Area

12-County Demographics % Total

Population	7,467,384	100%
0-17	1,638,271	22%
18-64	4,587,311	61%
65+	1,237,802	17%
Race/Ethnicity		
Hispanic or Latino	1,713,839	23%
Not Hispanic or Latino	5,749,545	
White alone	3,669,182	49%
Black or African American alone	932,311	13%
Asian alone	841,077	11%
Two or more races	235,191	3%
All Others	71,784	1%
Median Household Income	\$93,902	

Source: U.S. Census Bureau, 2021 American Community Survey 1-Year Estimates



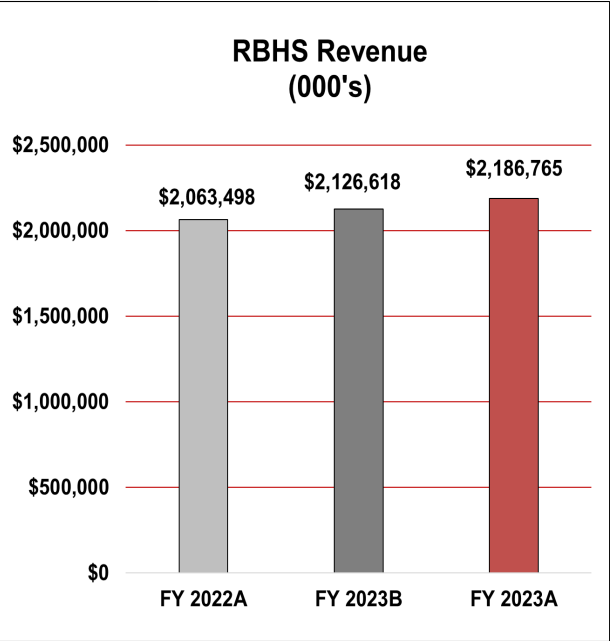
Rutgers Health Status Report

- Background/Reminder
- Progress Report

RBHS had a breakeven budget in FY 2023 and achieved a surplus of \$49.9 million.

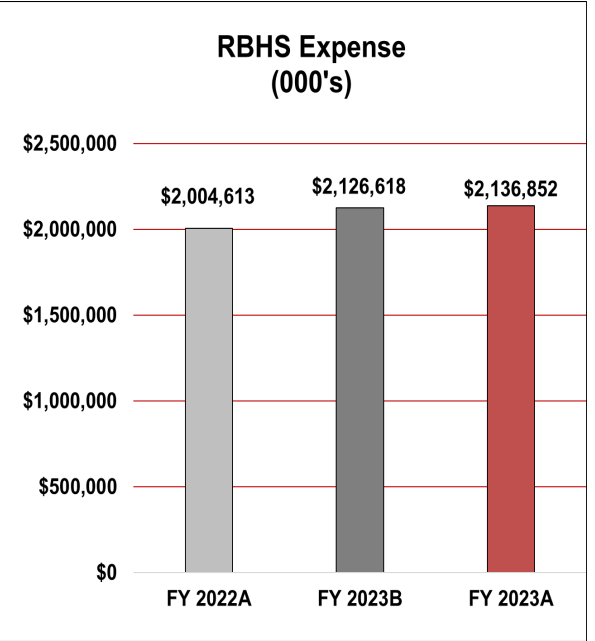
Revenues

RBHS FY 2023 revenues of \$2,186.8 million were better than the budget by \$60.1 million or 2.8%



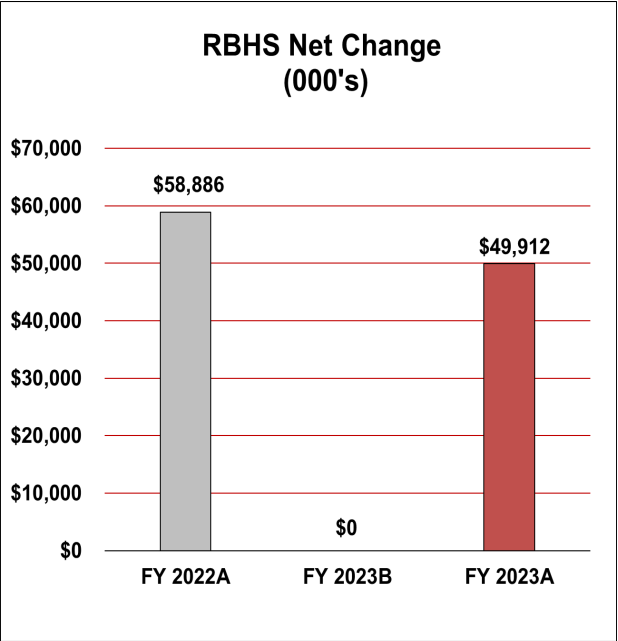
Expenses

RBHS FY 2023 expenses of \$2,136.9 million were higher than the budget by \$10.2 million or 0.5%



Surplus/(Deficit)

RBHS FY 2023 results of \$49.9 million were better than the breakeven budget





RBHS – Financial Performance

FY 2022A, FY 2023B, FY 2023A - (000's)

RBHS	Consolidated RBHS						
	FY 2022A	FY 2023B	FY 2023A	FY22A v FY23A \$ Fav / (Unfav)	FY22A v FY23A % Fav / (Unfav)	FY23B v FY23A \$ Fav / (Unfav)	FY23B v FY23A % Fav / (Unfav)
Healthcare Revenue	445,369	437,727	477,020	31,651	7.1%	39,293	9.0%
Affiliated and House Staff Revenue	589,292	617,362	595,310	6,018	1.0%	(22,052)	(3.6%)
Grants and Contracts (incl. F&A)	387,426	412,367	440,402	52,977	13.7%	28,035	6.8%
State Paid Fringe	183,206	204,300	202,618	19,412	10.6%	(1,682)	(0.8%)
NJ State Appropriations	197,033	190,585	205,931	8,898	4.5%	15,346	8.1%
Student Tuition and Fees	207,270	215,104	209,505	2,235	1.1%	(5,599)	(2.6%)
Other Sources Revenue	53,903	49,173	55,979	2,076	3.9%	6,806	13.8%
Total Revenue	\$2,063,498	\$2,126,618	\$2,186,765	\$123,266	6.0%	\$60,147	2.8%
Total Salary	987,840	1,078,701	1,041,790	(53,950)	(5.5%)	36,911	3.4%
Total Fringe	323,682	399,317	377,439	(53,758)	(16.6%)	21,878	5.5%
Total Non-Salary	444,058	399,812	460,337	(16,279)	(3.7%)	(60,525)	(15.1%)
Total Expenses	\$1,755,580	\$1,877,830	\$1,879,566	(\$123,986)	(7.1%)	(\$1,736)	(0.1%)
Surplus / (Deficit) before RCM & Transfers	\$307,919	\$248,788	\$307,198	(\$720)	(0.2%)	\$58,411	23.5%
Margin	14.9%	11.7%	14.0%				
RCM & Other Transfers	241,740	252,990	251,989	(10,248)	(4.2%)	1,002	0.4%
Change in Fund Balance	\$66,178	(\$4,202)	\$55,210	(\$10,969)	(16.6%)	\$59,412	1413.8%
Margin	3.2%	(0.2%)	2.5%				
Other Adjustments:							
Plant Fund Transfers	(12,620)	(614)	(10,446)	2,173	17.2%	(9,833)	(1602.3%)
PY NA Usage*	5,327	4,816	5,149	(178)	(3.3%)	333	6.9%
Change in Fund Balance Operations	\$58,886	\$0	\$49,912	(\$8,973)	(15.2%)	\$49,912	0.0%
Margin	2.9%	0.0%	2.3%				

*Includes non-operating accounts for Prior Year Net Asset Usage (PY NA Usage)

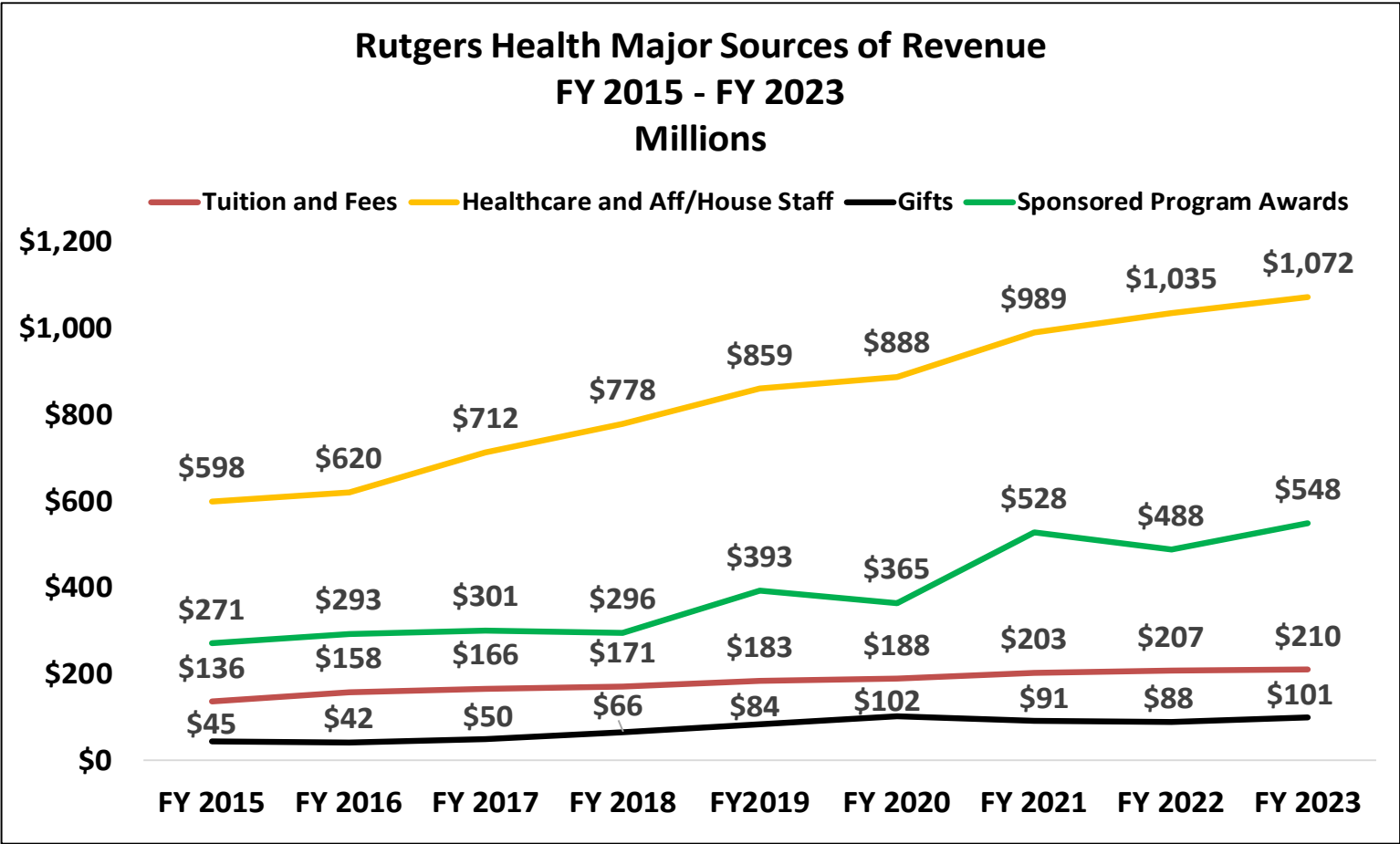


Financial Performance by Unit

FY 2022A, FY 2023B, FY 2023A - (000's)

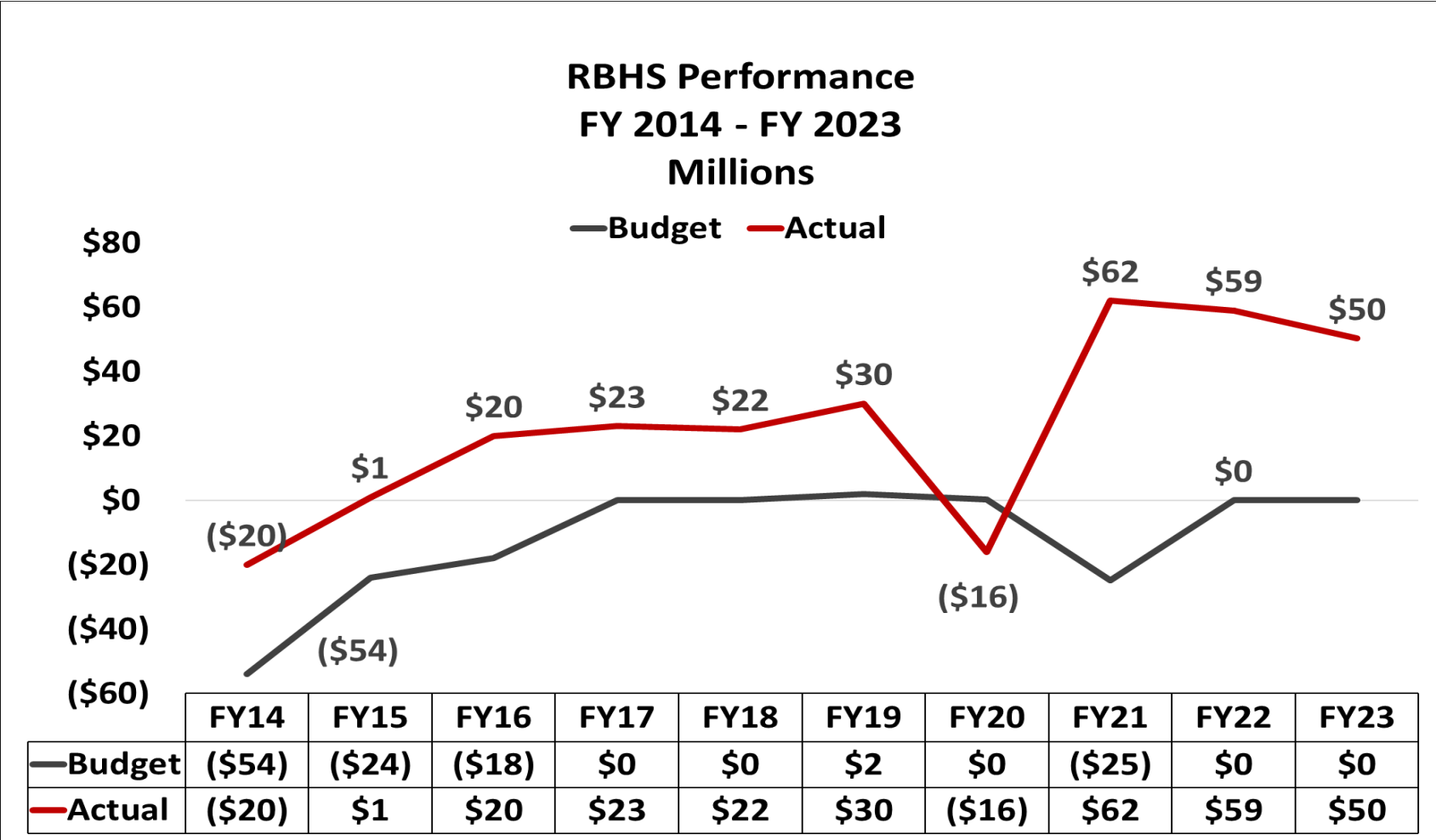
	Consolidated RBHS			Variances	
RBHS Units	FY 2022A	FY 2023B	FY 2023A	FY22A v FY23A \$ Fav / (Unfav)	FY23B v FY23A \$ Fav / (Unfav)
Chancellor	\$42,343	\$22,606	\$35,603	(\$6,740)	\$12,997
UBHC	\$9,346	\$0	\$12,104	\$2,758	\$12,104
NJMS	\$1,577	\$0	\$2,777	\$1,200	\$2,777
Parking	\$0	\$0	\$2,551	\$2,551	\$2,551
IFH	(\$978)	\$0	\$2,242	\$3,220	\$2,242
BHI	(\$136)	\$0	\$2,147	\$2,282	\$2,147
CABM	\$1,647	\$0	\$1,589	(\$59)	\$1,589
EOHSI	\$329	\$0	\$1,122	\$793	\$1,122
RSDM	\$268	\$0	\$923	\$655	\$923
CTS	\$239	\$0	\$720	\$480	\$720
EMSOP	\$1,029	\$0	\$610	(\$419)	\$610
RITMS	\$1,639	\$0	\$393	(\$1,246)	\$393
CINJ	\$5,007	\$0	\$286	(\$4,720)	\$286
SHP	\$2,459	\$0	\$265	(\$2,194)	\$265
Dining	\$0	\$0	\$0	\$0	\$0
Housing	\$0	\$0	\$0	\$0	\$0
SGS-BHS	\$990	\$0	(\$247)	(\$1,237)	(\$247)
SON	\$437	\$0	(\$1,002)	(\$1,439)	(\$1,002)
SPH	\$131	\$0	(\$1,981)	(\$2,112)	(\$1,981)
RWJMS	(\$7,444)	(\$22,606)	(\$10,189)	(\$2,745)	\$12,417
Total RBHS	\$58,886	\$0	\$49,912	(\$8,973)	\$49,912

Upon the Chancellor’s arrival, there was a projected deficit in FY 2014 of over \$54 million. RBHS has since focused on revenue enhancement rather than austerity measures only. The growth in major sources of revenue are depicted below and has helped with the financial turnaround.



Gifts for FY19 and FY20 do not include \$25M gifts in each year as a result of the RWJBH partnership

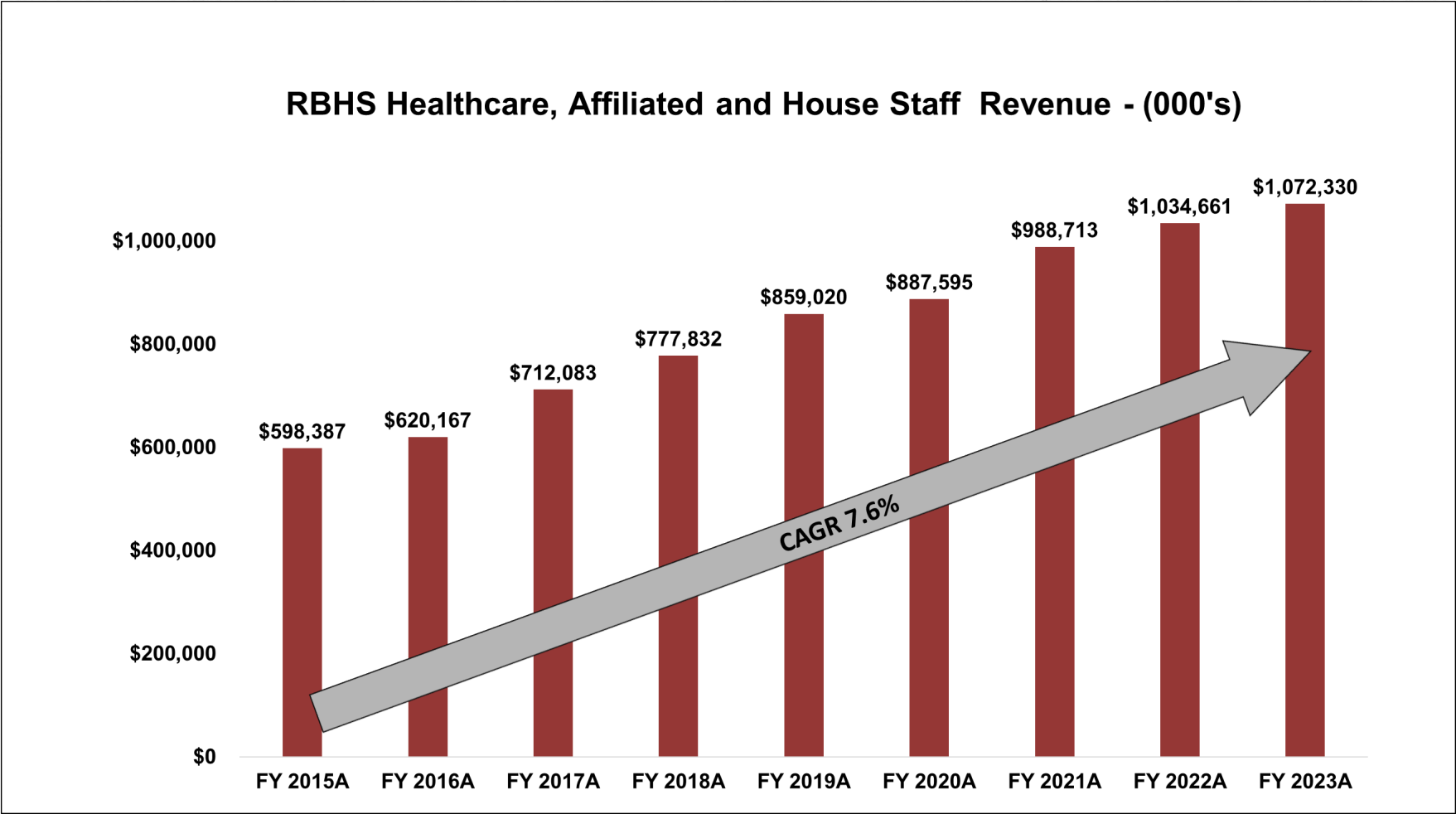
RBHS Budget versus Actual Financial Performance FY 2014 through FY 2023



FY18 Adjusted Surplus / (Deficit) excludes \$21.9M in non-operating items which mainly consists of grant revenue and expense adjustments related to FY17 and prior years

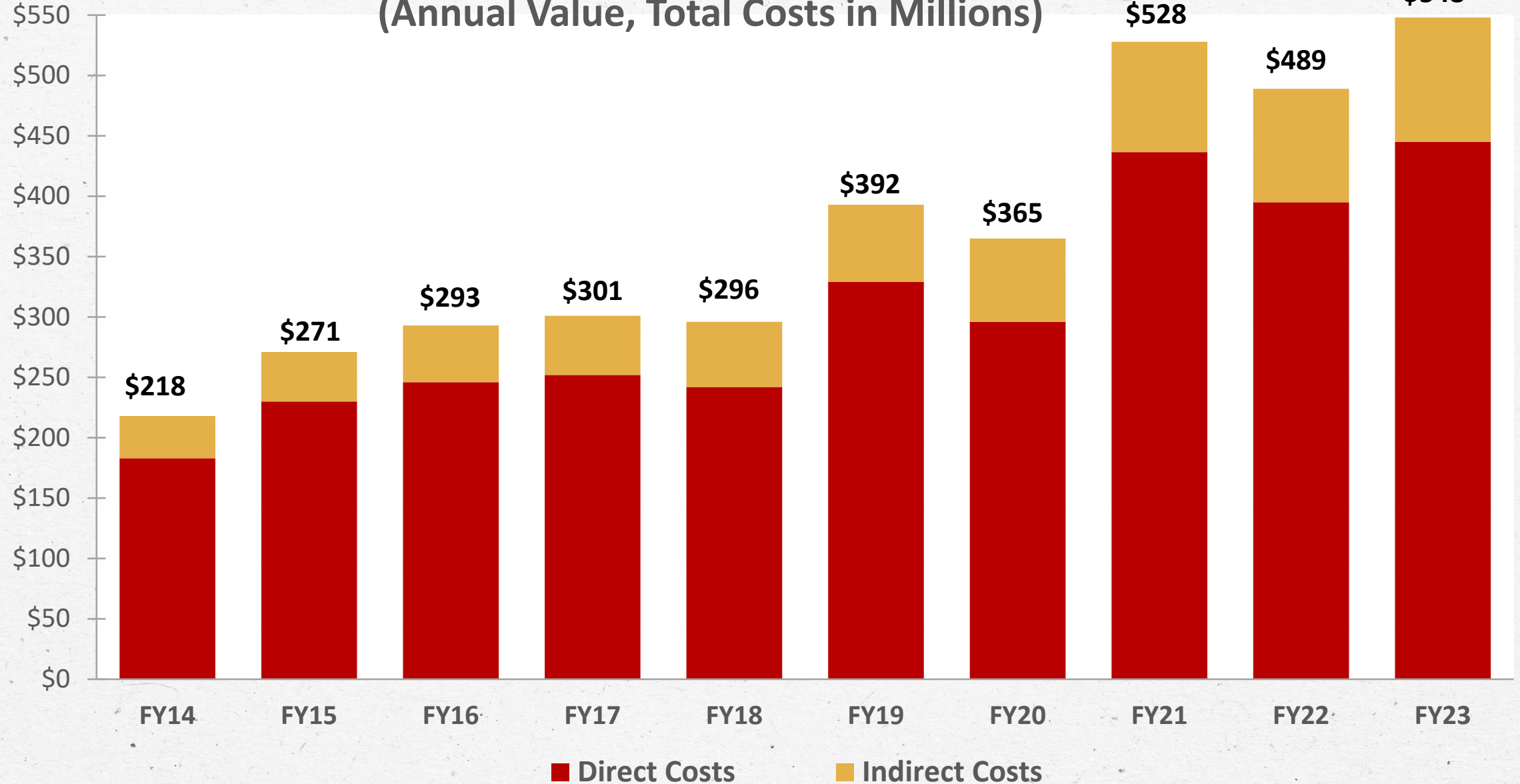
Note: UMDNJ submitted a breakeven budget in FY 2014, but financial trends showed a trajectory of a \$54M loss

Healthcare & Affiliated and House Staff Revenue (000's)



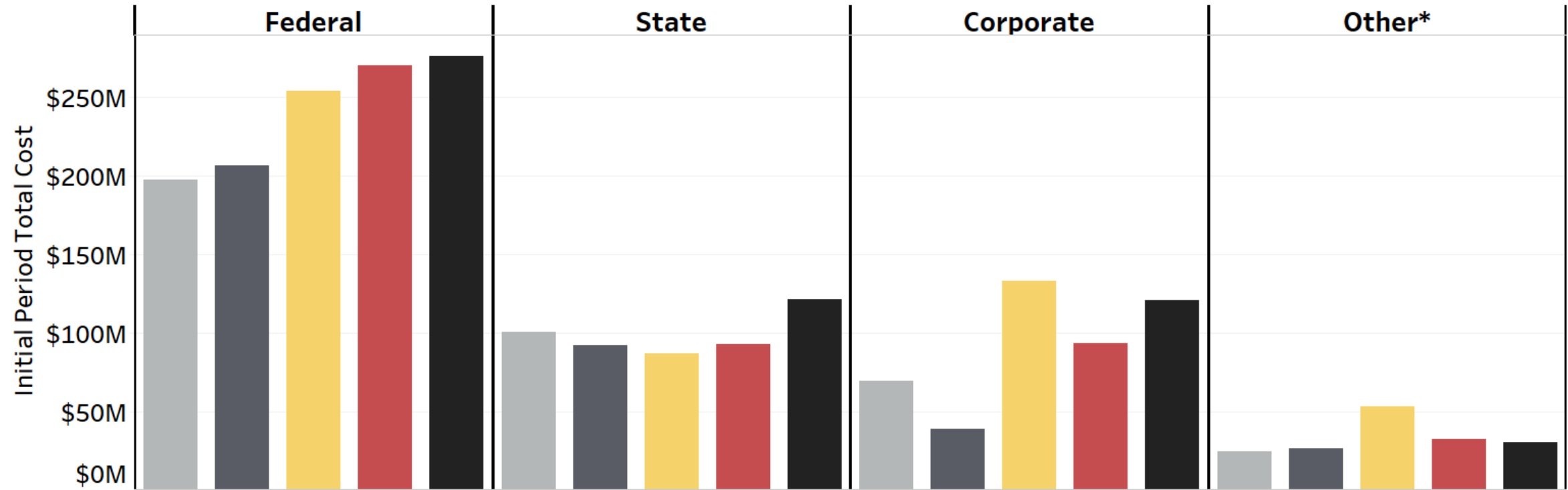
Awards FY14 – FY23

(Annual Value, Total Costs in Millions)



Awards by Sponsor Category

(Quarter: All)



	Federal	State	Corporate	Other*
2019	\$197,146,432	\$100,476,663	\$69,196,768	\$24,741,563
2020	\$206,242,950	\$92,299,191	\$39,168,026	\$26,437,878
2021	\$253,600,752	\$86,658,605	\$132,844,677	\$53,356,260
2022	\$269,553,463	\$92,863,600	\$93,217,038	\$32,647,896
2023	\$275,496,131	\$121,028,339	\$120,750,245	\$30,619,927

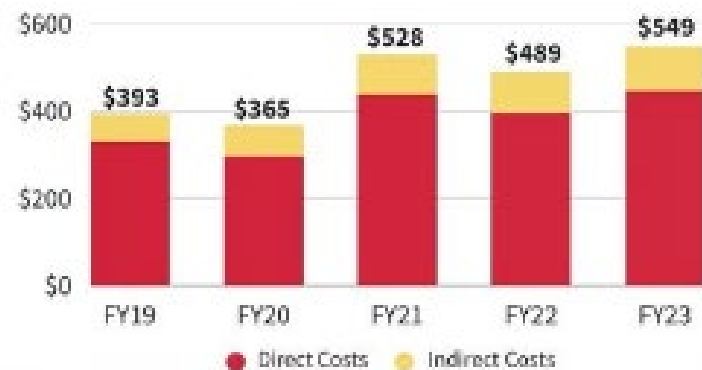
Other* includes Foundations, Associations, and other sponsors

Research Report:

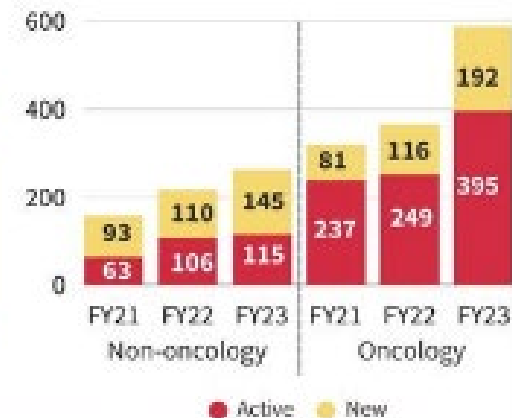


RBHS Research Report FY22|FY23

Sponsored Research Awards for FY19 through FY23
(Millions of Dollars)



Number of Clinical Trials



FY23



12
license agreements

66
invention disclosures

49
patents issued

92
patents filed

\$549M
total research
awards

\$200M
NIH
National Institutes
of Health

\$76M
Federal
Non-NIH

\$121M
Corporate

\$121M
State

\$31M
Other

FY23 Year-End Awards Summary

- FY23 Year-End: \$547,894,642
 - FY22 Year-End: \$488,281,997
 - \$ Change: \$59,612,645
 - Percent Change: **12%**
-
- Cumulatively, from FY 2014 to FY 2023, RBHS has brought \$3.7 billion in research funding to Rutgers University

Dean: School of Health Professions

- Following a national search, Jeffrey DiGiovanni, PhD has been selected as Dean of the School of Health Professions
- He served as Acting Associate Dean of Research and Professor & Chair of the Department of Communication Sciences and Disorders of the College of Allied Health Sciences at the University of Cincinnati through October 1, 2023
- He earned his PhD and MA from the University of Minnesota and a BS from the University of Massachusetts Amherst
- The author of over 40 original papers, books, and chapters, his research focuses on working memory, attention performance, and models for persons with normal and impaired hearing
- He holds two patents and founded a life sciences company marketing a novel device to treat tinnitus
- Past professional service includes participation on the American Speech-Language-Hearing Association's Audiology Advisory Council



Joint Chair of Neurosurgery

- Dr. Robert E. Gross has been appointed Chair of the Neurosurgery Department at NJMS and RWJMS, and Sr. Vice President for Neurosurgical Services at RWJBarnabas Health
- Currently, he is professor and vice chair of the Department of Neurosurgery at Emory holding the MBNA/Bowman Endowed Chair in Neurosurgery
- He is an expert in neuromodulation and innovative techniques using electrical impulses to target nerves within the brain to treat severe disorders including epilepsy, Parkinson's disease, and depression
- In addition to his clinical and research roles at Emory, he is director of the MD/PhD program, overseeing 95 medical students who also are pursuing doctorates in research
- Funded by NIH since 2005, Dr. Gross is PI of 5 projects and is a co-investigator on 9 additional NIH and industry-supported research projects
- He officially joined Rutgers on November 6



AVC for Student Affairs

- Kyle D. Warren, PhD, MAE has been appointed to the part time position of Associate Vice Chancellor for Student Affairs
- Dr. Warren serves as Sr. Vice Dean for Administration and Student Affairs at the RSON
- He will now also be responsible for proposing and developing RBHS-wide student affairs initiatives and support services, advising on best practices in program and policy development, and enhancing coordination and communication among the schools
- He will also serve as an administrative liaison, representing RBHS in partnering with the student affairs leads across the University



RUTGERS
School of Nursing

US News & World Report Rankings - Best Graduate Schools



- # 1 in New Jersey, # 6 in the nation, Nursing–D.N.P.
- # 1 in New Jersey, # 7 in the nation, Physician Assistant
- # 1 in New Jersey, # 14 in the nation, Nursing–Master’s
- # 1 in New Jersey, # 17 in the nation: Public Health: Social and Behavioral Sciences
- # 1 in New Jersey, # 22 in the nation, Public Health
- # 1 in New Jersey, # 24 in the nation, Pharmacy
- # 1 in New Jersey, # 32 in the nation, Healthcare Management
- # 1 in New Jersey, # 34 in the nation, Nursing–Midwifery
- # 1 in New Jersey, # 36 in the nation, Rehabilitation Counseling
- # 1 in New Jersey, # 38 in the nation, Physical Therapy
- # 1 in New Jersey, # 68 in the nation, Medical Schools–Research (Robert Wood Johnson Medical School)
- # 2 in New Jersey, # 71 in the nation, Medical Schools–Research (New Jersey Medical School)
- # 1 in New Jersey, # 81 in the nation, Nursing–Anesthesia

Preparing for a Rutgers School of Medicine



UPDATE:

The latest news on the
Rutgers School of Medicine integration
from

Deans Amy P. Murtha, MD, and Robert L. Johnson, MD, FAAP

Virtual Town Hall on RSOM Integration: Link



[Medical School Integration 8.29.23 on Vimeo](#)



RUTGERS

New Jersey Medical School



RUTGERS

Robert Wood Johnson
Medical School

Medical School Integration

LCME Accreditation & the Curriculum

TUESDAY

Sept. 19, 2023



5 P.M.



[About the Medical School Integration | Rutgers Health](#)

One-on-One Chats with the Deans Start This Month!

Deans Amy P. Murtha, MD, and Robert L. Johnson, MD, FAAP, are hosting virtual sessions in the next few months to give faculty, staff, and learners the opportunity to speak with them about the integration of Rutgers' two medical schools. You have the chance to register today to ask questions and share your input, which will help inform the integration process.

Reserve your 10-minute "chat" with Deans Murtha and Johnson in one of the following sessions:

- **Oct. 25** -- 10:30 - 11:30 a.m.
- **Nov. 8** -- Noon - 1 p.m.
- **Nov. 9** -- 1:30 - 2:30 p.m.
- **Nov. 16** -- 2 - 3 p.m.

The deans also are hosting events for one-on-one discussions with each dean separately.

- **Dean Murtha's** one-on-one chats will be held on **Oct. 24**, from 2 - 3 p.m.; on **Nov. 2**, from noon - 1 p.m.; and on **Nov. 30**, from 2 - 3 p.m.
- **Dean Johnson's** one-on-one chats will be held on **Oct. 19**, from 12:30 - 1:30 p.m.; **Nov. 22**, from 3 - 4 p.m.; and **Dec. 7**, from noon to 1 p.m.

Make your reservation for one of these sessions here. Appointments are limited, so please sign up for only one session.

New LCME Accreditation

*While the LCME Accreditation process is rigorous in monitoring, it also allows for **innovation and flexibility**.*

*Given the outstanding yet different curricula at NJMS and RWJMS, this will be a clear **advantage and asset** as we move towards a **single accreditation**.*

Innovation and Excellence

Our **timeline** will drive our approach to our curriculum as we pursue joint accreditation.

We are building a medical school for the future.

We have not even imagined all the possibilities for the Rutgers School of Medicine.

Today, pursuit of a school with parallel curricula may be an optimal way to **begin** the integration of the schools and simultaneously drive the **innovation and excellence** we seek.



Rutgers Biomedical & Health Sciences 10 Year Anniversary



Anniversary Symposium: March 20, 2024

- Our 10 Year Anniversary Academic Symposium will focus on health equity
- Scheduled for March 20, 2024 it will feature keynote speaker: Dr. Eliseo Perez-Stable, Director of the National Institute on Minority Health and Health Disparities



National Institute
on Minority Health
and Health Disparities

RBHS Chancellor Awards

Chancellor Awards 2023

Excellence in Basic Sciences Research Award - Established Investigator

- Ah-Ng Tony Kong EMSOP

Excellence in Clinical or Health Sciences Research Award - Early Career

- Stephanie Shiau SPH
- Chintan Dave EMSOP

Established Investigator

- Olivia A. Wackowski SPH

Excellence in Clinical or Healthcare Delivery Award

- Erin Muckey NJMS
- Kiwon Lee RWJMS

Excellence in Community Service Award

- Ana Natale-Pereira NJMS
- Anita Kinney SPH
- Jamir Tuten NJMS

Emerging Leader Award

- Neil Silver, RWJMS

Excellence in Diversity, Equity and Inclusion Award

- Herminio L. Perez RSDM
- Teri E. Lassiter SPH
- Arpita Jindani GHI
- Courtney Terry NJMS

Excellence in Education and Teaching Award

- Sophia Chen NJMS
- Ilya Ostrovsky NJMS

Distinguished Educator Award

- Andrew R. Berman NJMS

Distinguished Mentor Award

- Elisa Bandera RWJMS

Distinguished Innovator Award

- James V. Guarrera NJMS

Leadership Award

- Eldo Kuzhikandail, BHI



Team Award

- NJMS Research With A Heart
- RSDM Holocaust Survivor Program

Sustained Service Award

- Carol Rayside INT
- Marianne Shen EMSOP
- Gloria Bailey NJMS
- Matthew Iozzio IFH
- Margaret Koller IFH
- Yaritsa Villegas SON

2023 Chancellor Awards

Lifetime Distinguished Service Award

For exceptional, distinguished service to RBHS through extraordinary, transformative, and/or significant lifetime contributions to the institution.

Linda Loughman Tanzer, CINJ, Chief Financial and Administrative Officer



Lifetime Distinguished Achievement Award

For a sustained and distinguished lifetime record of achievement in at least one of the RBHS mission areas (clinical care, education, research, community engagement).

Alfred F. Tallia, RWJMS, Professor and Chair of the Department of Family Medicine and Community Health





Rutgers Health External Marketing Plan

Name Change

THE MASTER BRAND.
A NO-BRAINER.

|
R

| **RUTGERS HEALTH**

|
OUR END GAME.
A NEW DIMENSION FOR RUTGERS.
ACKNOWLEDGES THE WHOLE.

RUTGERS

What is Rutgers Health

- As New Jersey's academic health center, Rutgers Health takes the integrated approach of educating students, providing specialized and compassionate clinical care for its communities, and conducting innovative research, promising life-changing health for all.
- Rutgers Health is a “bench-to-bedside” institution, bringing discoveries in the lab directly to patients across the state and around the world.

Key Considerations



Rutgers Health is our new, outward facing brand.

We need a clear, relatable identity.

The health space is cluttered with similar messaging and style.

We need to be different.

We need to stand out.

The complexities of Academic Health are difficult to explain.

We need to distill it down to its impacts.

We need people to understand.

Campaign Overview

Goal

Create a Rutgers Health campaign that's an expression of the new brand platform, communicating the life-changing health for all that begins at Rutgers Health, New Jersey's academic health center.

Objective(s)

Establish brand awareness and build brand equity. Help people understand the many benefits of academic health.

Target Audience

General Public

Audience Insights

18 and over

New Jersey residents and parts of Pennsylvania and New York

All levels of education

May or may not be seeking care or education opportunities

Our Approach

Strategy

Take the complex world of academic health and distill it down to life-changing impacts we've made in the areas of research, education, service, and patient care. To start, we are beginning this campaign with four “proof points” that help illustrate these areas, namely:

- Microbiome research and its impacts on human health
- Dual Pharma MD program
- Patient Care
- Art in Health

And talk to people in a way that maybe they're not used to, especially in this field.

Creative Concept

Breathing New Life

The goal of academic health is to never let anything become stale, stagnant, covered in the dust of “we've just always done it that way.” So let's be refreshingly honest. Boldly straightforward and relatable. Frank. And talk to people in a way that maybe they're not used to —especially in this field. All while letting them know how Rutgers Health is breathing new life into the academic health model. We didn't invent it, but we're perfecting it. By revitalizing the idea as a philosophy and a practice, creating a new standard for health and care.

Rutgers Health & Athletics





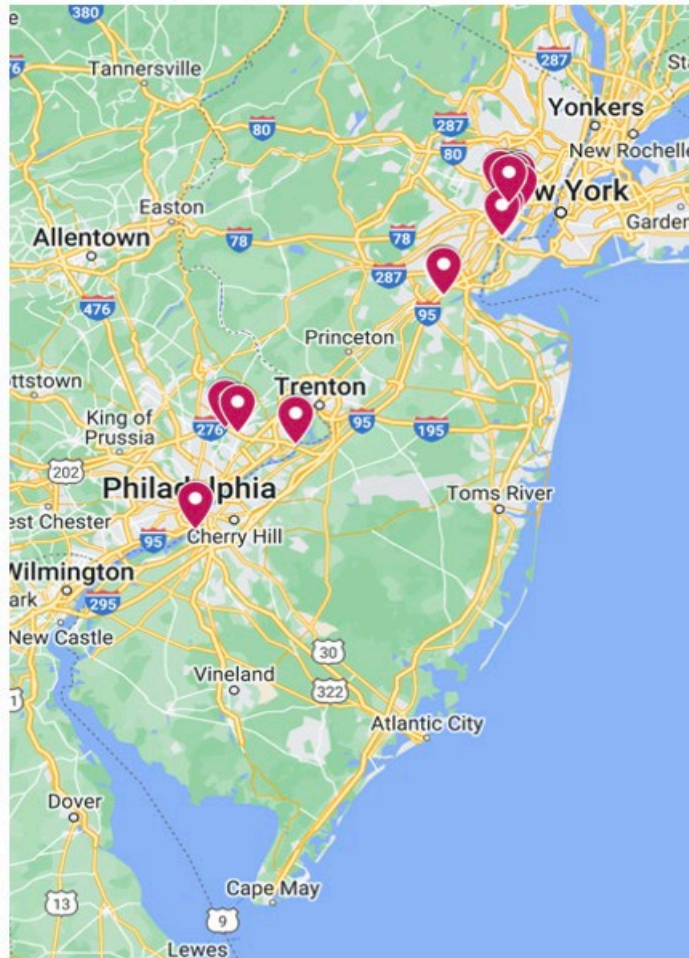
What does this cheese doodle-looking thing have to do with treating asthma?

A whole lot, really. Because scientists at our Center for Advanced Biotechnology and Medicine are conducting groundbreaking research on how microbiomes like this one may be altered by antibiotic use early in life. Understanding these interactions between antibiotics and microbiomes may help prevent the development of allergies and even asthma. It's just one of the ways we're using academic health to breathe new life into research.

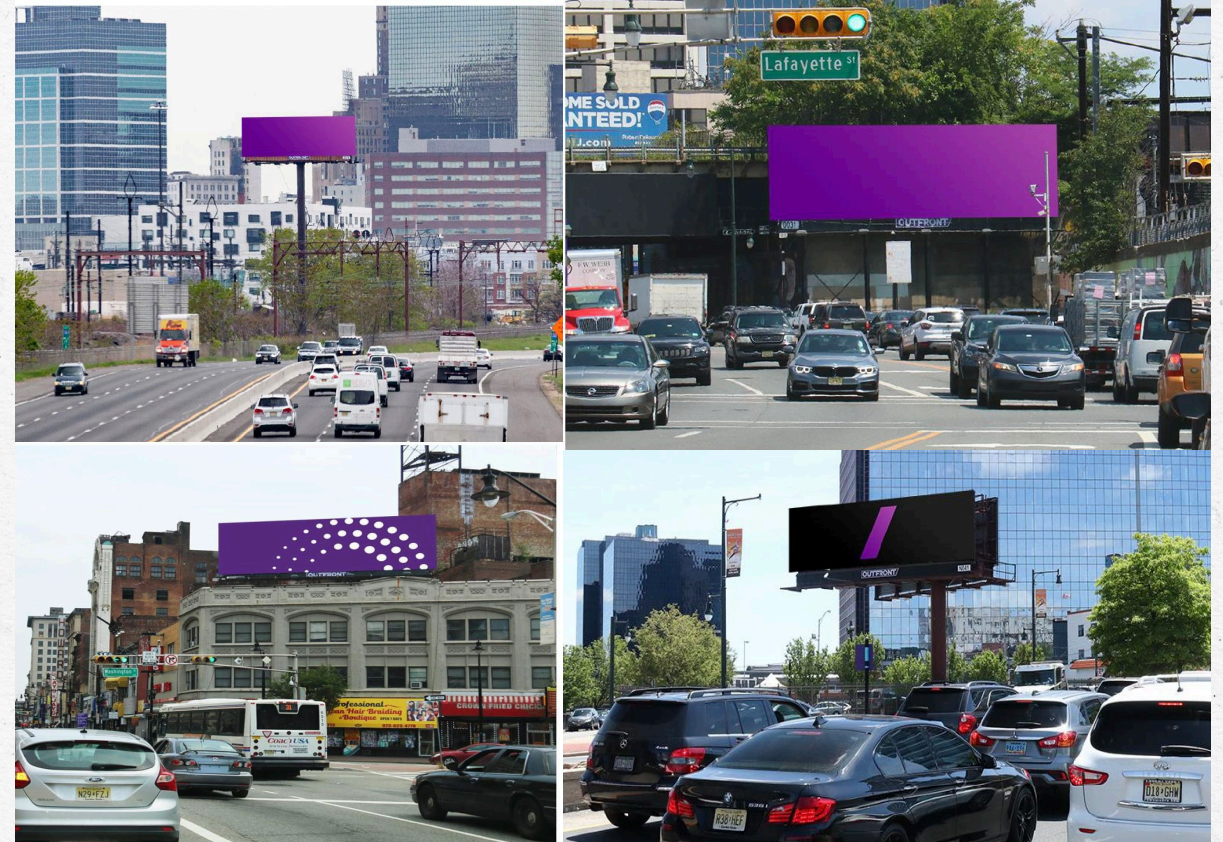
R | **RUTGERS HEALTH**

Creative & Placements

Map of Billboard Placements



R
RUTGERS
HEALTH



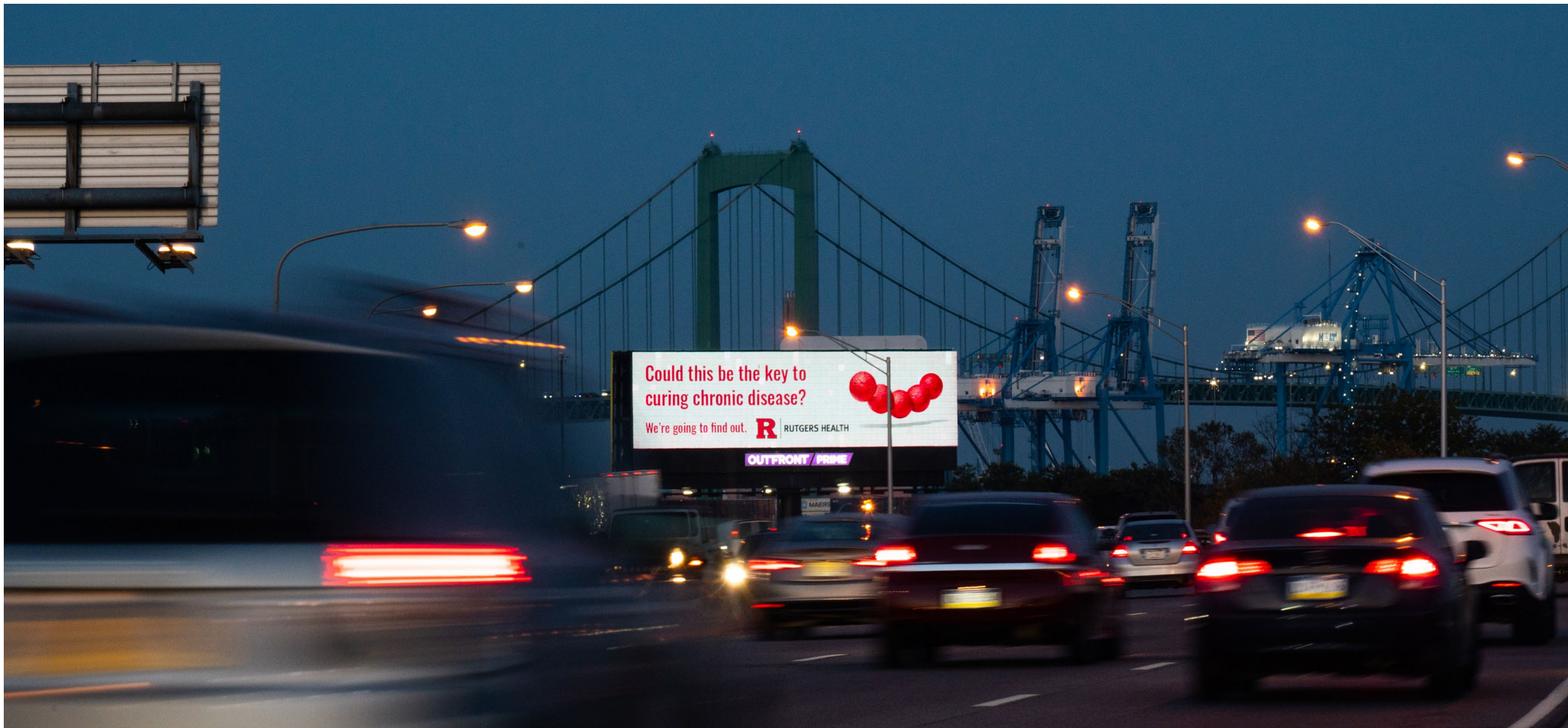
Here for
Health.

Here for
Newark.

R | RUTGERS HEALTH







Rutgers Health Commercials

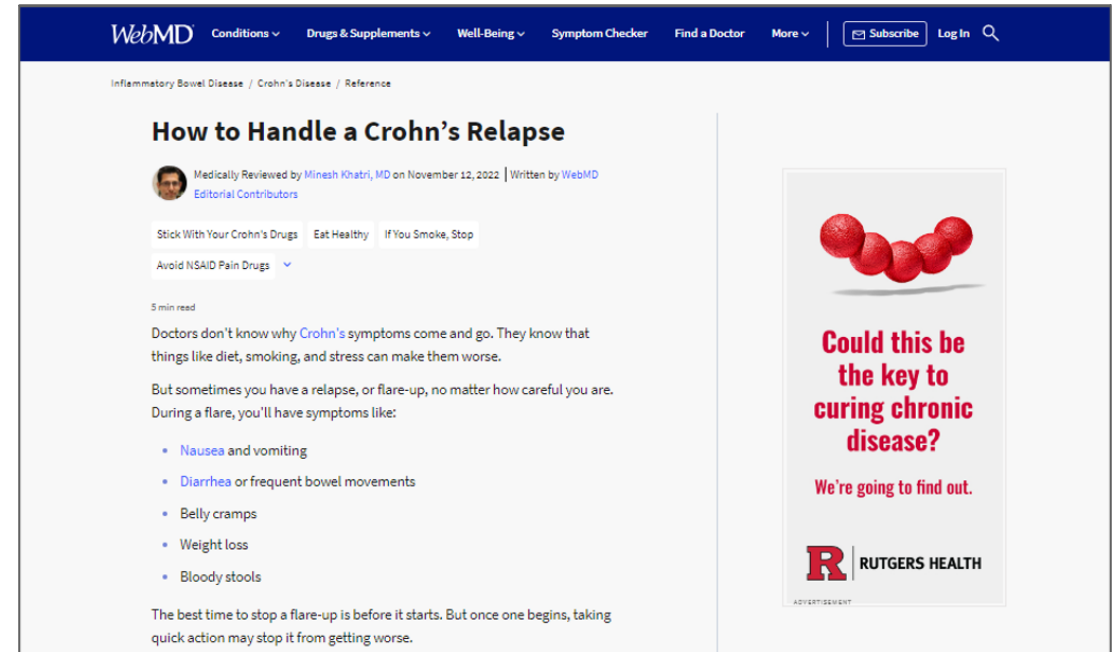


Landing Page & WebMD



New Jersey's Academic Health Center

Rutgers Health is New Jersey's academic health center, taking an integrated approach to educating students, providing specialized and compassionate clinical care for our communities, and conducting innovative research. This collaboration uniquely enables us to revitalize our ideas about patient care and create life-changing health for all. Its eight schools, behavioral health network, and four centers and institutes unite to bring discoveries from the lab directly to patients across the state and around the world.





Rutgers Health Internal Marketing Plan

Posters



Then.



Now.

Education. Knowledge and discovery.
Delivery of care. Community service.
Now, we're united under one name.
Always breathing new life into the
health of New Jersey and the world.
Together at Rutgers Health.

Screens



**Could this be the key to
curing chronic disease?**

We're going to find out.



**Breathing New Life
Into Health**



Rutgers Health Physical Master Plan

- Current capital planning and construction initiatives include:
 - Medical Science Building Renovation
 - “New” University Hospital Building
 - RWJBH Morris Cancer Pavilion
 - Rutgers Health Building New Brunswick

Rutgers Health Newark Physical Master Plan

Current capital planning and construction initiatives for the RBHS Newark Campus include:

- “New” University Hospital-Newark
- NJMS Medical Science Building Renovation



Recent Media Coverage:

A \$600M Plan to Deliver Life-Changing Health

Architects and engineers have completed an essential planning step in what may become Rutgers' largest-ever investment in Newark, a transformational renovation at New Jersey Medical School (NJMS) that would cost an estimated \$600 million and bring more world-class physician-scientists and biomedical researchers to the city.

"We are committed to this record investment in Newark because we believe it will create massive returns, not only for Rutgers but also for the City of Newark and the State of New Jersey," said Brian Strom, chancellor of Rutgers Biomedical and Health Sciences.



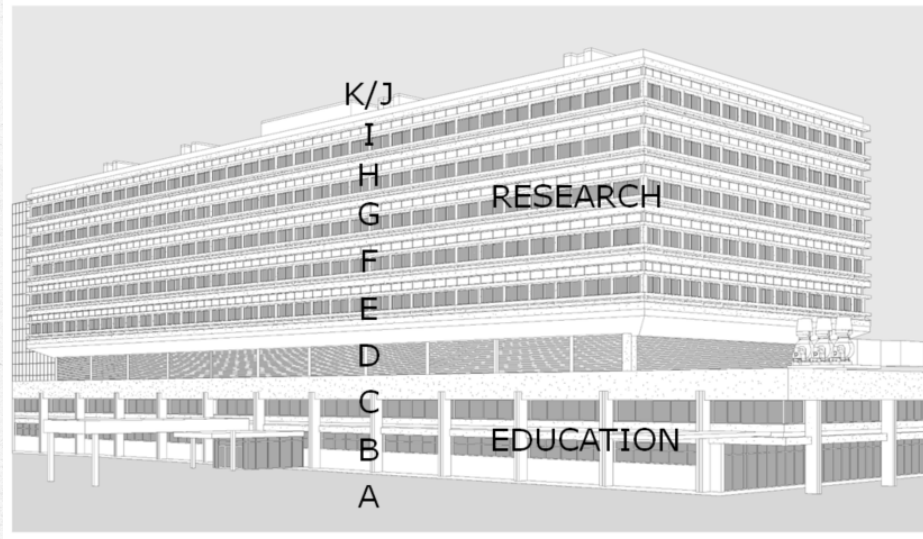
“Simultaneous investments could create a truly world-class facility for the people of Newark and the entire region.”

- ED JIMENEZ, UNIVERSITY HOSPITAL PRESIDENT AND CEO

Featured In



New Jersey Medical School - Medical Science Building Renovation



Medical Science Building Overview

- Built in 1976
- 650,000 GSF
- Limited Alterations/Renovations, most notably to the A Level Vivarium

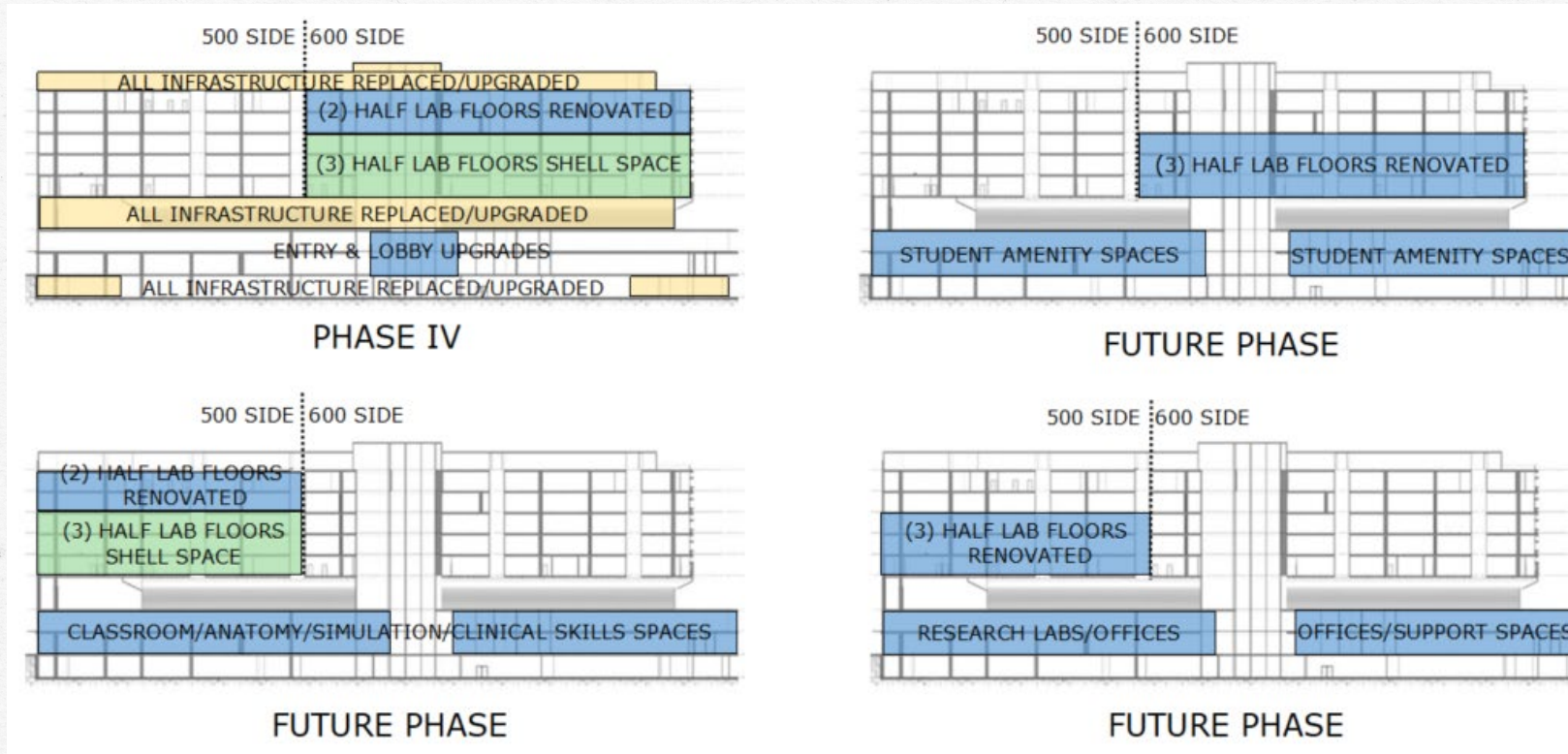
New Jersey Medical School - Medical Science Building Renovation



Objectives of the MSB Renovation:

- Provide new medical research laboratories, laboratory support spaces and laboratory faculty staff workspaces which are efficient, flexible, collaborative and which will attract and retain the best and brightest principal investigators.
- Upgrade, reconfigure and/or expand all medical education spaces to support the current pedagogical trends in medical education and exceed the expectations of instructors and students;
- Enhance the exterior appearance of the existing building, provide a new entrance pavilion, upgrade building infrastructure, and reconfigure the major public spaces on Levels B and C in a way that will communicate that the building and its programs have undergone a major transformation.

New Jersey Medical School - Medical Science Building Renovation

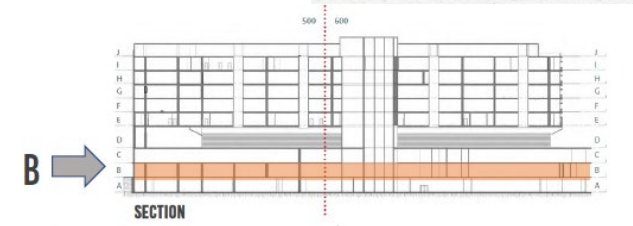


Renovation Phases:

- Phase I Life Safety Infrastructure \$14 M
Approved BoG Dec 2019
- Phase II Design Development \$ 5M
Approved BoG June 2021
- Phase III Pre-Construction \$ 8M
Review by F+F April 2022
- Phase IV Infrastructure + Research Renovations \$TBD
Future Submission
- Phases V (and beyond) Phasing TBD \$TBD
Future Submission(s)

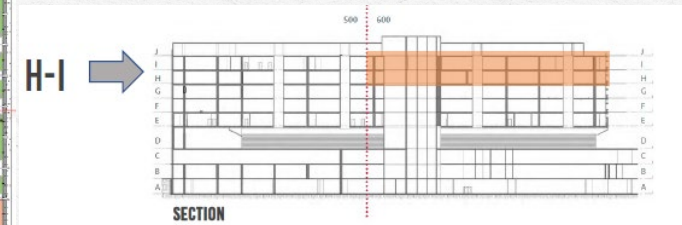
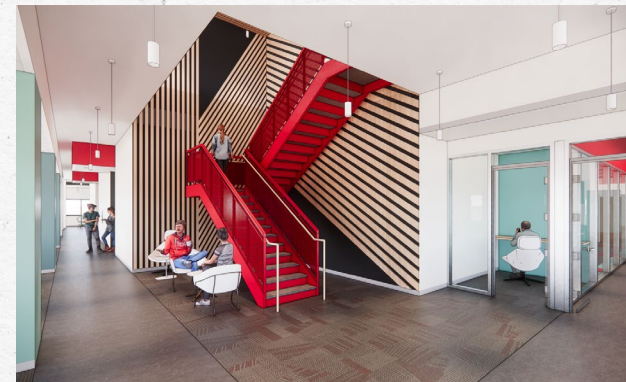
New Jersey Medical School - Medical Science Building Renovation

Phase IV: B and C Level Entrance, Lobby, and Education Renovations



New Jersey Medical School - Medical Science Building Renovation

Phase IV: H and I Research Laboratory, Support, and Office Renovations





MSB Renovation – North View



R RUTGERS
HEALTH









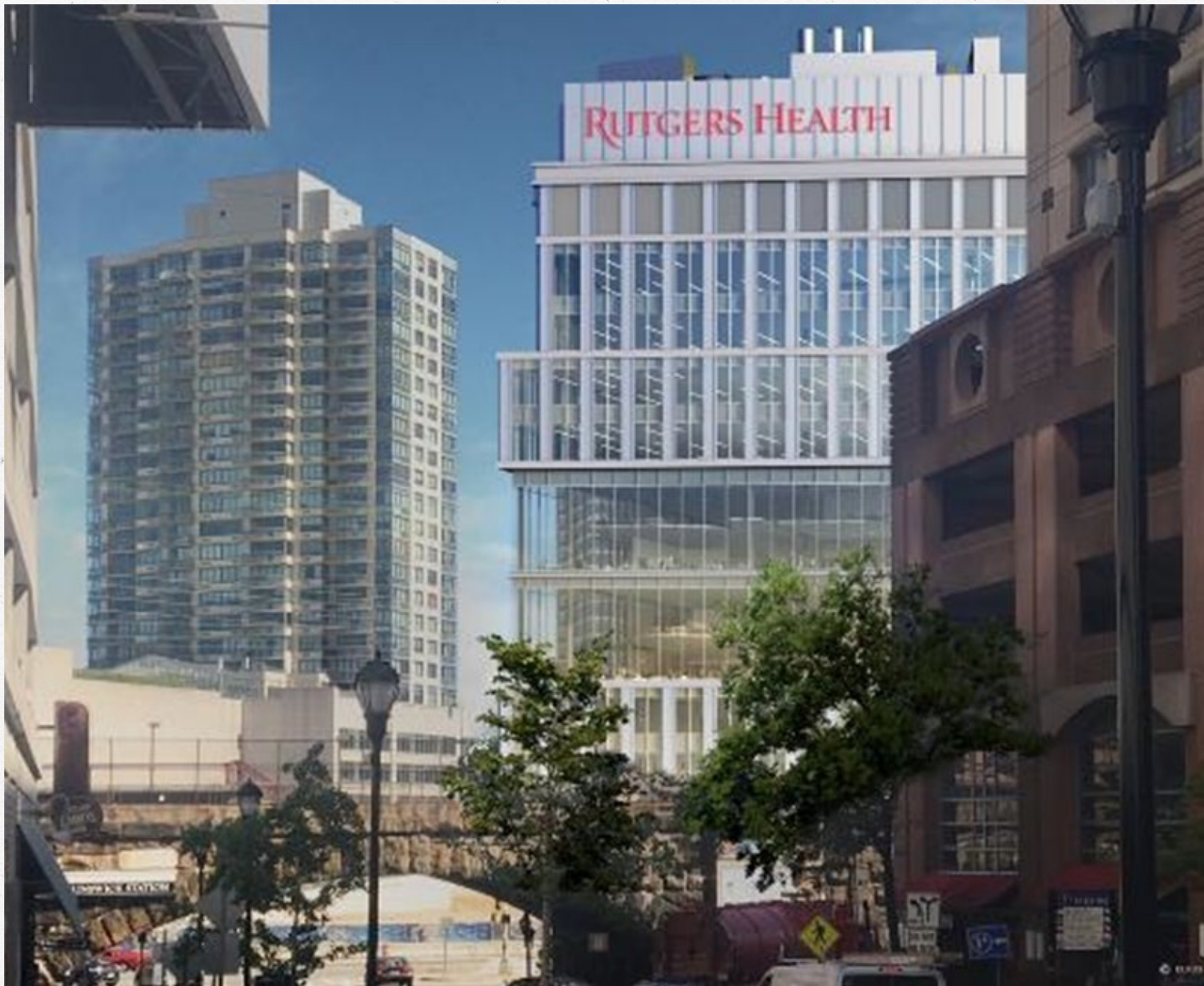
Rutgers Health New Brunswick Physical Master Plan

Current capital planning and construction initiatives for the RBHS New Brunswick:

- RWJBH Morris Cancer Pavilion
- RWJBH “Plum 2”
- Rutgers Health Building



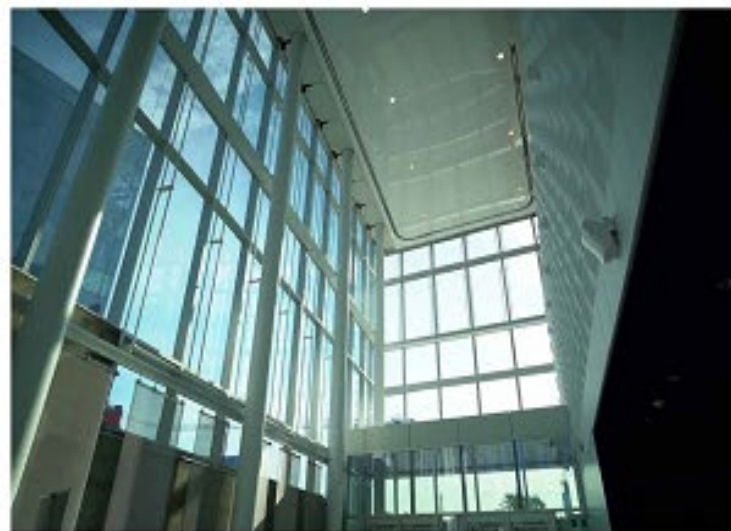




An architectural rendering of the Rutgers Health Building at night. The building is a multi-story structure with a prominent glass facade that reveals internal circular atriums and office spaces, all illuminated from within. The building is situated next to a train station platform, with overhead power lines and tracks visible in the background. The sky is dark with some clouds and stars. The overall scene is a digital visualization of the proposed building design.

Rutgers Health Building Design

VIEW FROM TRAIN STATION



Rutgers Health Building

- Devco reports that construction of the Rutgers Health Building is proceeding on schedule with anticipated occupancy by CY 2025
- The building will be 25' higher than CINJ and CAB with Rutgers Health signage on 3 sides



Goals:

- Goals for the second decade of Rutgers Health include:
 - Maintenance of fiscal health across the chancellor unit
 - Surpassing Big10 peers in federal research funding
 - Ongoing development of NJ's first and best Academic Health System with RWJBH
 - Maintain renewal of NCI Designated Comprehensive Cancer Center
 - Maintain renewal of NIH Clinical and Translational Science Award
 - Increase in philanthropy – both large single donations and annual giving
 - Completion of major capital construction projects: Rutgers Health Building in NB and wholesale renovation of MSB in Newark
 - Increased recognition/reputation of Rutgers Health brand
 - LCME Accreditation of Rutgers School of Medicine circa 2028

Our Shared Goal:

To build one of the best academic health centers in the country, with an emphasis on *one*.

